

# Racine Yacht Club

## Andrea T. Regatta

### Opti Sailing Instructions

**Date:** Friday, July 28th, 2023

**Boats:** Opti

**Schedule:** 8:00 Registration/Check in and boat rigging  
9:00 Competitors meeting  
10:00 First warning  
\*5 Races Max (1 race counts as a regatta)\*  
Lunch and awards after racing

**Rules:** This regatta will be governed by the 2021-2024 Racing Rules of Sailing.

#### Notices to Competitors:

Notices to Competitors will be posted on the official regatta notice board located in the RYC hallway between the bathrooms.

#### Safety:

- All competitors shall wear, while on the water an approved US Coast Guard PFD that depends on 100% foam.
- Before the warning signal of the first race, boats shall check in by sailing on starboard tack past the stern of the committee boat.
- A boat retiring from the race shall report to the committee boat before leaving the course.

#### Class flags:

- Opti - Blue

**Racing Area:** Weather dependent: Lake Michigan, north of the Harbor entrance or inside the harbor.

**Marks:** All marks will be rounded to port.

- Pin mark is green and the windward rounding marks are orange. Green pin mark will act as leeward mark.

#### Start:

The Starting line will be between a staff displaying an orange flag on the Race Committee Boat and the starting mark. A gathering whistle will notify the competitors of the warning signal for a 3 minute start.

**Finish:** The finish will be the same as the start line.

**Course:** Windward / leeward. Starting pin will act as the Leeward Mark \*The committee boat will notify the course letter for course.

**Support Teams:**

- Team leaders, coaches and other support persons shall stay outside areas where boats are racing from the time of the preparatory signal for the first start until all boats have finished or retired or the race committee signals a postponement, general recall or abandonment.
- All support boats must have and operate a working VHF radio on channel 72.
- Coaching shall be allowed only outside the course area beyond the start and finish lines and the lay lines on either side. The start and finish line areas extend beyond the line for a distance equal to the length of the line.

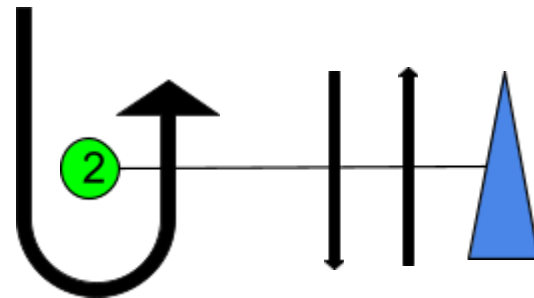
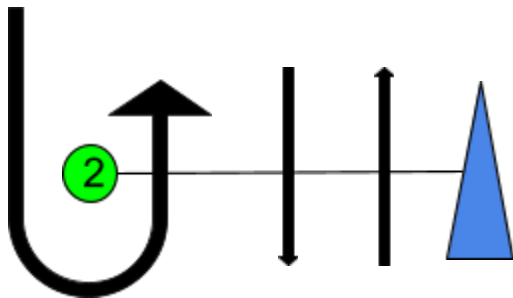
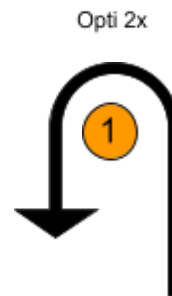
**A Course (2 legs)**

Start-1-2-Finish



**B Course (4 legs)**

Start-1-2-1-2-Finish



2x